



QUEENSFERRY HIGH SCHOOL

S3 Pathway Planning

→ Young people moving into S4

CONTENTS

<u>Senior Phase</u>	Page 1
<u>Curriculum Structure</u>	Page 2
<u>Scottish Credit and Qualification Framework</u>	Page 3
<u>Planning your learner journey</u>	Page 5
<u>ENGLISH & LITERATURE</u>	Page 6
<u>EXPRESSIVE ARTS</u>	Page 9
<u>HEALTH & WELLBEING</u>	Page 14
<u>MATHEMATICS & NUMERACY</u>	Page 23
<u>MODERN LANGUAGES</u>	Page 26
<u>SCIENCE</u>	Page 28
<u>SOCIAL SUBJECTS</u>	Page 34
<u>TECHNOLOGIES</u>	Page 39
<u>SUPPORT FOR PUPILS</u>	Page 49

THE SENIOR PHASE

The period of education from the start of S4 to the end of S6 has the particular purpose of providing each young person in Scotland with opportunities to acquire certification through the Scottish Qualifications Authority as well as continuing with the experiences and outcomes they encountered during their years of broad general education.

In their senior phase our pupils are entitled to:

- ✓ Support and advice to enable them to gain as much as possible from the opportunities that our curriculum can provide.
- ✓ The opportunity to obtain appropriate qualifications.
- ✓ The opportunity to continue to develop the attributes and capabilities of the four capacities.
- ✓ Opportunities to develop the skills for learning, life and work with a continuing focus on literacy, numeracy and health & wellbeing.
- ✓ Support in moving to future learning or employment (positive destinations).

For many learners school will continue to deliver learning in the senior phase. However, this will increasingly involve partnerships with a range of other providers such as colleges, work-based training providers, local businesses and employers.

Developing Scotland's Young Workforce (DYW)

DYW is a national priority in Scotland and aims to help support our young people in progressing through school and into a positive and sustained destination beyond school.

At Queensferry High School, we are working hard to develop skills for learning, life and work to ensure our young people are successful and ambitious.

CURRICULUM STRUCTURE

This booklet has been produced to enable parents/carers and learners to understand more about the curriculum structure and courses offered in our Senior Phase. There is information about each course offered and it is important that parents/carers and pupils are familiar with this before any final choice is made – this document is designed as a gateway for you to access further information to make informed choices.

In S4 all learners will study towards 7 qualifications – English, Maths & 5 other choices.

- + English will have 4 periods per week.
- + Mathematics or Applications of Mathematics will have 5 periods per week.
- + For each of their other 5 qualifications, learners will have 4 periods per week.
- + These choices are in addition to their continued core curriculum offer of Health and Wellbeing (2 periods), PSE (1 period) and RMPS (1 period).

All returns will be reviewed to ensure they provide appropriate challenge and meet the needs of the learner. Where this requires further discussion, they will have a course choice interview with a member of the Senior Leadership Team.

All effort will be made to accommodate a young person's first choice but the following contingencies are in place:

- + Young people should indicate a reserve subject when completing their choice.
- + Where the choice including the reserve can't be fulfilled, the young person's Pupil Support Leader or House Depute Headteacher will discuss potential alternatives, allowing time for parental input before final decisions are made.

Please follow the link embedded within your young person's report to complete your young person's course choice online – your young person will need to sign into their school account using the usual username and password to successfully complete this process.

If you have any issues accessing the form please contact the relevant Pupil Support Leader.

SCOTTISH CREDIT AND QUALIFICATIONS FRAMEWORK (SCQF)

The scope for qualifications within school and alongside our partners is ever changing. Our offer is always expanding and we strive to ensure that the language we use to describe these qualifications is such that our young people are supported in understanding the value of the qualifications they hold, in a wider Scottish Educational context, and that they can plan for their next steps.

Throughout this document we will refer to Levels of study, in line with the Scottish Credit and Qualifications Framework (SCQF).

THE SCOTTISH CREDIT AND QUALIFICATIONS FRAMEWORK					
SCQF Levels	SQA Qualifications			Qualifications of Higher Education Institutions	Apprenticeships & SVQs
12				Doctoral Degree	Professional Apprenticeship
11				Masters Degree, Integrated Masters Degree, Post Graduate Diploma, Post Graduate Certificate	Graduate Apprenticeship Professional Apprenticeship SVQ
10				Honours Degree, Graduate Diploma, Graduate Certificate	Graduate Apprenticeship Professional Apprenticeship
9			Professional Development Award	Bachelors / Ordinary Degree, Graduate Diploma, Graduate Certificate	Graduate Apprenticeship Technical Apprenticeship SVQ
8		Higher National Diploma		Diploma Of Higher Education	Higher Apprenticeship Technical Apprenticeship SVQ
7	Advanced Higher, Awards, Scottish Baccalaureate	Higher National Certificate		Certificate Of Higher Education	Modern Apprenticeship SVQ
6	Higher, Awards, Skills for Work Higher				Modern Apprenticeship Foundation Apprenticeship SVQ
5	National 5, Awards, Skills for Work National 5				Modern Apprenticeship SVQ
4	National 4, Awards, Skills for Work National 4	National Certificate	National Progression Award		SVQ
3	National 3, Awards, Skills for Work National 3				
2	National 2, Awards				
1	National 1, Awards				

SCOTTISH CREDIT AND QUALIFICATIONS FRAMEWORK (SCQF)

Our in-school offer, in conjunction with the [Scottish Qualifications Authority \(SQA\)](#), sits within Level 3 → 7 of the framework. At each SCQF level there are a number of ways which our learners can demonstrate their progress and attainment:

- ✓ **Unit Awards** – certification for individual units of work.
- ✓ **National Progression Award (NPA) / Skills for Work (SfW)** – combinations of units at the same level in a particular subject or curricular area may result in the awarding of an NPA or SfW award.
- ✓ **National Qualifications** – demonstration of assessment standards throughout their study (often including successful Unit Awards) lead to learners being presented for external and/or additional assessment.

It is important to note that progress on to the next level of study will only be recommended once young people have received the NPA or National Qualification pass (A→C) at their current level of study. To attempt the next level without the appropriate preparation and foundations, could be detrimental to their overall progress. It may take more than one academic year to demonstrate security in a level before a learner is recommended to make that next step i.e. to complete unit awards in one year before going on to complete the National Qualification in a second year.

Our learners will have received a report which details their recommended pathway for their next academic year – these recommendations are based on the evidence gathered throughout their current study and our subjects specialist's knowledge of the qualifications ahead.

[Early indication will be made, via our Senior Phase reporting timeline, of the projected attainment of each young person within their current Level of study.](#)

If a young person wishes to select a level of study which has not been recommended, they should speak with the Curriculum Leader for the subject and their Pupil Support Leader for advice and guidance.

PLANNING YOUR LEARNER JOURNEY

Throughout your time at Queensferry Community High School, you have been building your career management skills. We've been supporting you through Skills Academies, Developing the Young Workforce partnerships, your PSE lessons and throughout your timetable to build your understanding of these areas and to empower you to make good choices to set you up for your future.



If you need to refresh your knowledge of these, or are looking for more support, there are some helpful resources mapped out below.

Self

→ [About Me Tool](#)

This can help you to understand the careers and industries which might be best suited to your personality, interests and values.

Strengths

→ [Strengths Tool](#)

This can help you to understand what you do well, what you do often and what you enjoy. The tool will then help to highlight your strengths for you.

Horizons

→ [Subject Choices Tool](#)

By selecting the subjects you are interested in, the tool will help match you to careers and industries with a wealth of information about what that future might hold for you.

Networks → Outside of your home, there is a wealth of support available from key people in school:

- ✓ **Subject teachers**
- ✓ **Curriculum Leaders**
- ✓ **Our school based Careers Adviser** – Gillian.Ross@sds.co.uk
- ✓ **Pupil Support Leaders**



Dundas - Ms Lamb



Forth - Ms Hannah



Hopetoun - Mr Thomas



Rosebery - Ms MacNeil

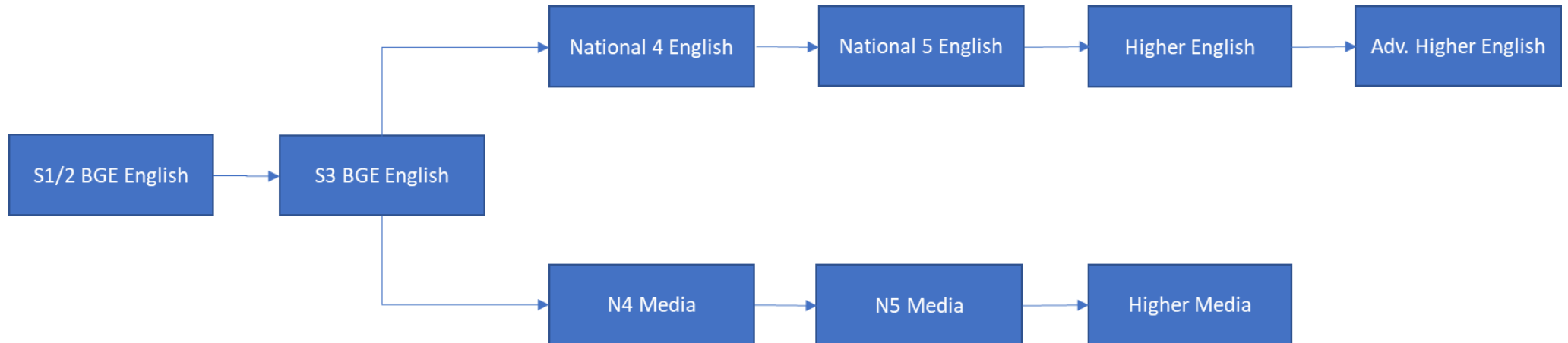
GENERAL POINTS

We will do our utmost to give pupils the choices they request, however, this will not always be possible:

- ✓ If too few learners opt for a subject then it may become necessary to review their original choices.
- ✓ If an over demand exists for a subject (where staffing restricts class numbers) it may become necessary to review their original choices.

ENGLISH & LITERACY PATHWAYS @ QHS

More information on the specific options available at this stage in their learner journey are on the pages which follow.



ENGLISH

The skills in language and literacy developed through English classes are of personal, social and economic importance to our young people. Pupils gain a sense of personal identity, appreciate how their language is used and learn how to communicate effectively with others in a range of situations. In addition, being literate unlocks access to the wider curriculum offered by the school and facilitates lifelong learning.

SCQF	Assessment Overview	Attainment
Level 5	Folio (30%) & External Exam (70%) Unit assessments	→ National 5 Award. → Internally assessed Unit Award(s)
Level 4	Unit assessments + Added Value Unit Unit assessments	→ National 4 Award. → Internally assessed Unit Award(s)

Learners may be recommended to begin study towards qualifications in English at Level 4 or 5 in the senior phase dependant on progress through their BGE.

See the SQA pages for [English](#) for more detailed information of content, assessment criteria and assessment standards at each level.

MEDIA

Media Studies is a growing and very successful subject both at QHS and across Scotland. The media of mass communication play a significant role in the modern world. Knowledge of the media is an important aspect of work in an information society and an essential element of active citizenship. Pupils who we have presented over the past four years have found the course very enjoyable as well as challenging. If you enjoy English you will probably enjoy Media Studies.

Students of media will develop technical skills, teamwork and the ability to think for themselves, creatively and critically. You will build confidence through problem-solving and individual research, thus preparing yourself for further study of the media, whether academic or vocational, and for your role as a responsible young adult in our society. Our course focuses on the study of film and print media.

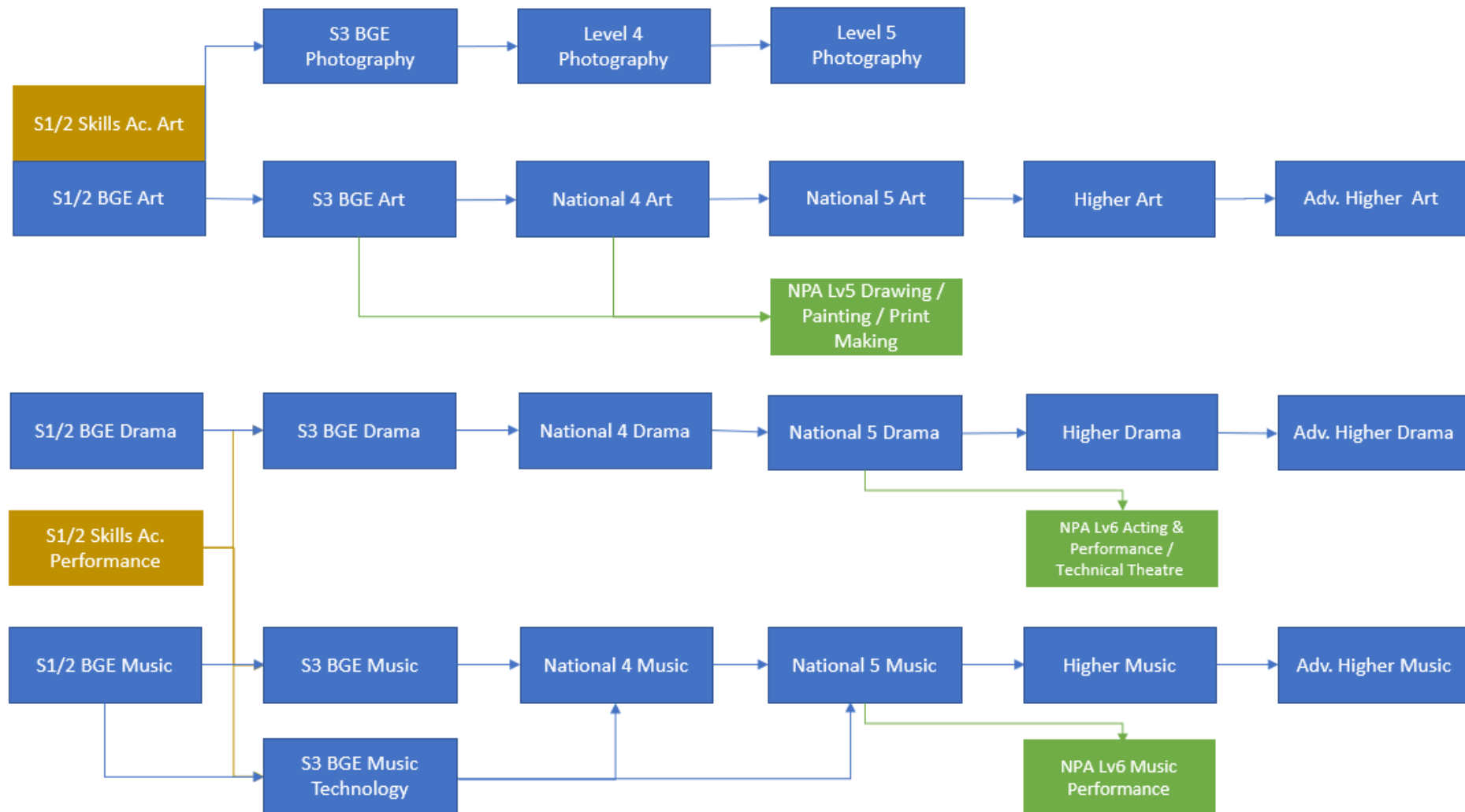
SCQF	Assessment Overview	Attainment
Level 5	Media Creation (50%) & External Exams (50%) Unit assessments	→ National 5 Award. → Internally assessed Unit Award(s)

Learners may be recommended to begin study towards qualifications in Media at Level 4 or 5 in the senior phase dependent on progress through their BGE. Alternatively, learners entering Level 5 should have been awarded National 4 English and learners entering Level 6 should have been awarded National 5 English (A → C).

See the SQA pages for [Media](#) for more detailed information of content, assessment criteria and assessment standards at each level.

EXPRESSIVE ARTS PATHWAYS @ QHS

More information on the specific options available at this stage in their learner journey are on the pages which follow.



ART & DESIGN

Studying Art & Design encourages pupils to problem solve, think creatively and critically and even develops their organisation and time management skills. The Art & Design department have secured positive destinations for many of our former pupils, in fields such as product design & engineering, architecture, illustration, fashion textiles and computer arts.

SCQF	Assessment Overview	Attainment
Level 5	Design Portfolio, Expressive Portfolio & External Exam Unit assessments	→ National 5 Award. → NPA (Drawing, Painting or Art & Design) → Internally assessed Unit Award(s)
Level 4	Design Portfolio or Expressive Portfolio Design Portfolio or Expressive Portfolio	→ National 4 Award. → Internally assessed Unit Award(s)

Learners may be recommended to begin study towards qualifications in Art & Design at Level 4 or 5 in the senior phase dependant on progress through their BGE.

See the SQA pages for [Art & Design](#) for more detailed information of content, assessment criteria and assessment standards at each level.

DRAMA

Throughout the course, all pupils will have the opportunity to take on the role of an actor, and a role in the Production Team (lighting, sound, set design, costume, make-up, props). You will devise from a text, script, or story, etc. and present your response to a variety of target audiences. Lessons will be split into two sections: rehearsals of actors; and acting skills and Production Team preparations. You will be researching and devising from a range of stimuli, and understanding, exploring and applying a range of Drama skills in order to communicate ideas.

SCQF	Assessment Overview	Attainment
Level 5	Practical Performance (60%) & External Exam (40%) Unit assessments	→ National 5 Award. → Internally assessed Unit Award(s)
Level 4	Practical Performance & Unit Assessments Unit assessments	→ National 4 Award. → Internally assessed Unit Award(s)

Learners may be recommended to begin study towards qualifications in Drama at Level 4 or 5 in the senior phase dependant on progress through their BGE.

See the SQA pages for [Drama](#) for more detailed information of content, assessment criteria and assessment standards at each level.

MUSIC

Studying Music will allow pupils to work independently or in collaboration with others, and can help them to plan and organise, to make decisions and to take responsibility for their own learning. The course aims to enable pupils to:

- ✓ Broaden their knowledge and understanding of music and musical literacy by listening to music and identifying level-specific music concepts, signs and symbols
- ✓ Create original music using compositional methods - taking inspiration from the work of other composers and song-writers
- ✓ Perform music - Practise and perform level-specific music on two instruments, preparing a programme of solo pieces for assessment

SCQF	Assessment Overview	Attainment
Level 5	Practical Performance (50%), Assignment (15%) & External Exam (35%) Unit assessments	→ National 5 Award. → Internally assessed Unit Award(s)
Level 4	Unit Assessments & Added Value Unit Unit assessments (incl. Practical Performance)	→ National 4 Award. → Internally assessed Unit Award(s)

Learners may be recommended to begin study towards qualifications in Music at Level 4 or 5 in the senior phase dependant on progress through their BGE.

See the SQA pages for [Music](#) for more detailed information of content, assessment criteria and assessment standards at each level.

NPA PHOTOGRAPHY

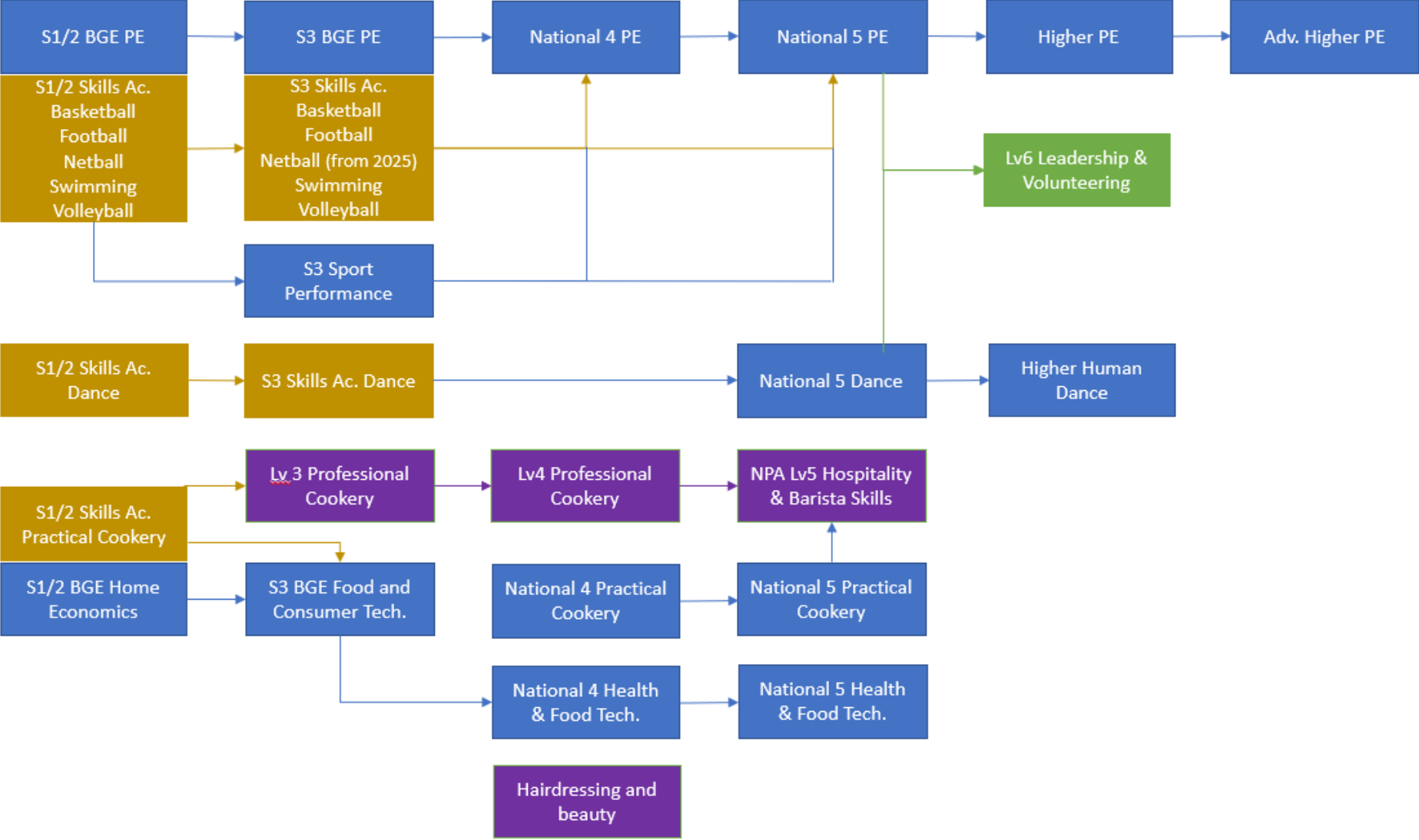
The National Progression Award for Photography is available at Level 4 or 5 depending on ability. The course can be done almost completely on pupil iPads and is a creative, fun and exciting course for young learners that enjoy photography as a hobby and want to learn more. Photographers will gain understanding of different photography genres and concepts, practical skills in photographing people and places and learn how to organise and work with photographic images

SCQF	Assessment Overview	Attainment
Level 5	Unit assessments	→ Level 5 award → Internally assessed Unit Award(s)
Level 4	Unit assessments	→ Level 4 award → Internally assessed Unit Award(s)

See the SQA [NPA Photography](#) web page for more detailed information of content, assessment criteria and assessment standards at each level.

HEALTH & WELLBEING PATHWAYS @ QHS

More information on the specific options available at this stage in their learner journey are on the pages which follow.



DANCE

Through our energetic and vibrant Dance programme, pupils will have the opportunity to study a variety of dance styles and in doing so achieve the outcomes for their certification at a level which is appropriate to their ability.

SCQF	Assessment Overview	Attainment
Level 5	Solo Performance, Choreography with Folio & External Exam Unit assessments	→ National 5 Award. → Internally assessed Unit Award(s)

Learners may be recommended to begin study towards qualifications in Dance at Level 5 in the senior phase dependant on progress through their BGE.

See the SQA pages for [Dance](#) for more detailed information of content, assessment criteria and assessment standards at each level.

EARLY LEARNING AND CHILDCARE – SKILLS FOR WORK

This course is ideal for any pupil interested in working within early education, primary education or childcare sectors. The course helps to develop employability skills and many transferable skills which are valuable in the workplace.

Students will complete the 4 units through real or simulated settings with an emphasis on group based activities. Where possible an integrated approach will be used and if possible, pupils will participate in a work placement in the local community. Some aspects of the course such as employability skills may be taught by specialist out with the department e.g. Careers Adviser.

SCQF	Assessment Overview	Attainment
Level 5	Unit assessments & Folio detailing experiences undertaken Unit assessments	→ Skills for Work Award → Internally assessed Unit Award(s)

Learners may be recommended to begin study towards qualifications in Early Learning and Childcare at Level 5 in the senior phase dependant on progress through their BGE.

See the SQA pages for [Early Learning and Childcare – Skills for Work](#) for more detailed information of content, assessment criteria and assessment standards at each level.

HEALTH AND FOOD TECHNOLOGY

Interested in a career in food, nutrition or health? This course looks at contemporary issues affecting food and nutrition, including ethical and moral considerations, sustainability of sources, food production and development, and their effects on consumer choices. You will analyse the relationships between health, food and nutrition allowing you to plan, prepare and create food products to a range of specific dietary and lifestyle needs. There is a practical element to the course which is supported by theory lessons which will allow you to gain the required knowledge and understanding. This course also provides a pathway to further training and/or employment in catering, food product development and the health sector. It also provides an opportunity for you to improve critical thinking, creativity, organisational skills and practical food preparation.

SCQF	Assessment Overview	Attainment
Level 5	Food Product Development Assignment (50%) & External Written Exam (50%)	→ National 5 Award.
Level 4	Unit Assessments & Added Value Unit Unit assessments (incl. Practical Assessment)	→ National 4 Award. → Internally assessed Unit Award(s)

Learners may be recommended to begin study towards qualifications in Hospitality at Level 4 or 5 in the senior phase dependant on progress through their BGE.

See the SQA pages for [Health and Food Technology](#) for more detailed information of content, assessment criteria and assessment standards at each level.

PRACTICAL COOKERY

Interested in a career in Hospitality? Enjoy cooking? Want a creative way to improve time management and organisational skills? Or want to gain some cookery skills for college/university? Then this is the course for you! You will develop the practical skills and techniques which are required for food production through creating a wide range of dishes. You will cook twice a week and have theory lessons to support your learning. You will also have the opportunity to take on roles and responsibilities in school catering events. Not only does this course provide a pathway to further training and/or employment in catering and hospitality, it also provides an opportunity for you to improve critical thinking, creativity, planning and organisational skills.

SCQF	Assessment Overview	Attainment
Level 5	Time Plan Written Assignment (13%), 3 course meal Practical Exam (62%) & External Written Exam (25%) Unit assessments (incl. Practical and Written Assessment)	→ National 5 Award. → Internally assessed Unit Award(s)
Level 4	Unit Assessments & Added Value Unit Unit assessments (incl. Practical Assessment)	→ National 4 Award. → Internally assessed Unit Award(s)

Learners may be recommended to begin study towards qualifications in Hospitality at Level 4 or 5 in the senior phase dependant on progress through their BGE.

See the SQA pages for [Hospitality – Practical Cookery](#) for more detailed information of content, assessment criteria and assessment standards at each level.

NPA PROFESSIONAL COOKERY - in partnership with EDINBURGH COLLEGE



Delivered in school at QHS

This National Progression Award (NPA) introduces pupils to techniques that are important in the professional cookery. It develops practical, technical and transferable skills in food preparation and cooking, and covers areas such as food hygiene, food preparation techniques, cookery processes and organisational skills.

The National Progression Award in Professional Cookery at SCQF level 4/5/6 is designed to equip pupils with the skills and knowledge required to progress through the various NPA awards and onto full-time college programmes such as the National Certificate (NC) in Professional Cookery, or to seek employment in the hospitality and catering industry, eg as trainee commis chef/chef apprentice. The NPA is aimed at pupils who may be interested in pursuing a career in the catering industry but who do not necessarily have prior experience of cookery.

SCQF	Assessment Overview	Attainment
Level 5	Unit assessments	<ul style="list-style-type: none"> → NPA Professional Cookery → Internally assessed Unit Award(s)
Level 4	Unit assessments	<ul style="list-style-type: none"> → NPA Professional Cookery → Internally assessed Unit Award(s)

See the SQA pages [Hospitality / Catering / Events / Bakery - SQA](#) for more detailed information of content, assessment criteria and assessment standards at each level

HAIRDRESSING AND BEAUTY SKILLS - in partnership with EDINBURGH COLLEGE



Delivered in school at QHS

This Level 4 and 5 qualification introduces pupils to a variety of skills that are required for the Hairdressing industry. It develops how to create a hair and beauty image based on a theme, shampooing, conditioning and treating hair, blow drying and finishing hair, plaiting hair and temporary hair colouring. Whilst building skills and knowledge, pupils will also gain essential practical experience in a professional salon environment. They will also have the opportunity of visiting the College where they will work in their training employability salon and academy with their high-end product companies (such as Wella) and equipment which will enhance their employability prospects even further.

This award in hair and beauty skills at SCQF Level 4 & 5 is designed to equip pupils with the skills and knowledge required to progress onto full-time college programmes such as the Introduction to Level 2 Hairdressing (SCQF Level 5), SVQ Level 2 Hairdressing (SCQF Level 5) or SVQ Level 2 Barbering (SCQF Level 5) and opportunities into employment within the hairdressing industry at a junior level.

SCQF	Assessment Overview	Attainment
Level 5	Unit assessments	→ VTCT Level 2 Certificate in Hair & Beauty Skills → Internally assessed Unit Award(s)
Level 4	Unit assessments	→ VTCT Level 1 Extended Certificate in Hair and Beauty Skills → Internally assessed Unit Award(s)

See the following pages [Hairdressing SVQ Level 2 \(SCQF 5\) | Edinburgh College](#) for more detailed information of progression routes and examples of assessment criteria and standards.

PHYSICAL EDUCATION

Please note – This year we are introducing a new alternative to Physical Education which may better suit individuals preferences, please compare this information with the following page before making a final choice.

Pupils will study how their performance is affected both positively and negatively through the four factors, Physical, Mental, Emotional and Social. They will plan, implement and evaluate improvement programmes to improve their performances through a range of activities. This could include Basketball, Badminton, Football and Volleyball.

SCQF	Assessment Overview	Attainment
Level 5	One off performance (50%) & Folio (50%) Unit assessments	→ National 5 Award. → Internally assessed Unit Award(s)
Level 4	Unit Assessments & Added Value Unit Unit assessments (incl. Practical Performance)	→ National 4 Award. → Internally assessed Unit Award(s)

Learners may be recommended to begin study towards qualifications in Physical Education at Level 4, 5 or 6 in the senior phase dependant on progress through their BGE.

See the SQA pages for [Physical Education](#) for more detailed information of content, assessment criteria and assessment standards at each level.

PHYSICAL EDUCATION → CREATIVE AND AESTHETIC

This is an alternative Physical Education course for pupils who have an interest in creative and aesthetic activities such as Dance, Cheerleading, Netball and Gymnastics. This course could also include activities such as Fitness, Volleyball, Hockey and Swimming. As with the traditional Physical Education pupils will study how their performance is affected both positively and negatively through the four factors, Physical, Mental, Emotional and Social. They will plan, implement and evaluate improvement programmes to improve their performances.

Pupils can only pick one from either Physical Education OR Creative and Aesthetic Physical Education.

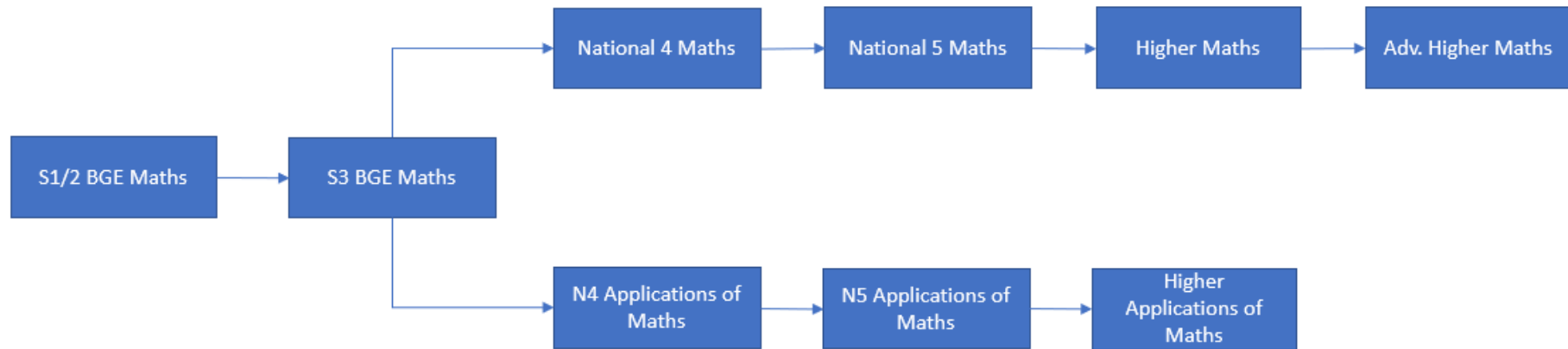
SCQF	Assessment Overview	Attainment
Level 5	One off performance (50%) & Folio (50%) Unit assessments	→ National 5 Award. → Internally assessed Unit Award(s)
Level 4	Unit Assessments & Added Value Unit Unit assessments (incl. Practical Performance)	→ National 4 Award. → Internally assessed Unit Award(s)

Learners may be recommended to begin study towards qualifications in Physical Education at Level 4, 5 or 6 in the senior phase dependant on progress through their BGE.

See the SQA pages for [Physical Education](#) for more detailed information of content, assessment criteria and assessment standards at each level.

MATHEMATICS & NUMERACY PATHWAYS @ QHS

More information on the specific options available at this stage in their learner journey are on the pages which follow.



APPLICATIONS OF MATHEMATICS

This course offers learners the opportunity to develop their understanding and numerical skills through our exploration of;

- ✓ Numeracy
- ✓ Managing Finance
- ✓ Statistics
- ✓ Geometry and Measure

Is this course best for me?

Colleges and Universities widely accept National 5 Applications of Maths for a number of Apprenticeships and degrees, including Nursing and Primary School Teaching.

SCQF	Assessment Overview	Attainment
Level 5	External Assessments (two papers – with/without the use of a calculator) Unit assessments	→ National 5 Award. → Internally assessed Unit Award(s)
Level 4	Unit Assessments & Added Value Assessment Unit Assessment (including Numeracy unit)	→ National 4 Award. → Internally assessed Unit Award(s)

Learners will be recommended to begin study towards qualifications in either Maths or Applications of Maths at Level 5 or Level 4 dependent on progress through their BGE.

See the SQA pages for [Applications of Maths](#) for more detailed information of content, assessment criteria and assessment standards at each level.

MATHEMATICS

The senior phase Maths curriculum offers learners the opportunity to develop their understanding and numerical skills through our exploration of;

- ✓ Expressions and Formulae
- ✓ Mathematical Relationships
- ✓ Applications of Maths (Level 5 only)

Each level is based around the same key units, with each building on the knowledge and understanding of the previous level.

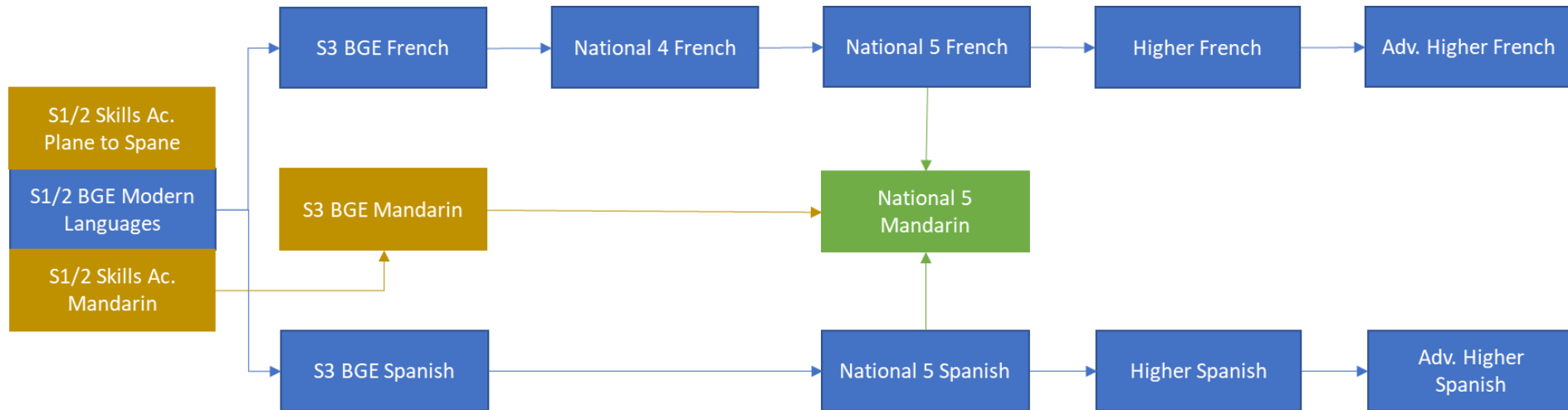
SCQF	Assessment Overview	Attainment
Level 5	External Assessments (two papers – with/without the use of a calculator) Unit assessments	→ National 5 Award. → Internally assessed Unit Award(s)
Level 4	Unit Assessments & Added Value Assessment Unit Assessment (including Numeracy unit)	→ National 4 Award. → Internally assessed Unit Award(s)

Learners will be recommended to begin study towards qualifications in Maths at Level 5 or Level 4 dependent on progress through their BGE.

See the SQA pages for [Mathematics](#) for more detailed information of content, assessment criteria and assessment standards at each level.

MODERN LANGUAGES PATHWAYS @ QHS

More information on the specific options available at this stage in their learner journey are on the pages which follow.



FRENCH, SPANISH & MANDARIN

Our aim in the senior phase is to provide opportunities for pupils to develop their communication skills and the competences needed for life and work in the modern world. We do this through a range of topic based units designed to develop the four key skills of Reading, Listening, Talking and Writing. Our topic units are across a range of contexts including, Society, Culture, Employability and Citizenship. Topics are designed to be engaging and relevant and a variety of teaching approaches and media are used. Topics include, media and technology, future plans and careers, healthy living and environmental concerns as well as cultural based activities.

SCQF Assessment Overview

Attainment

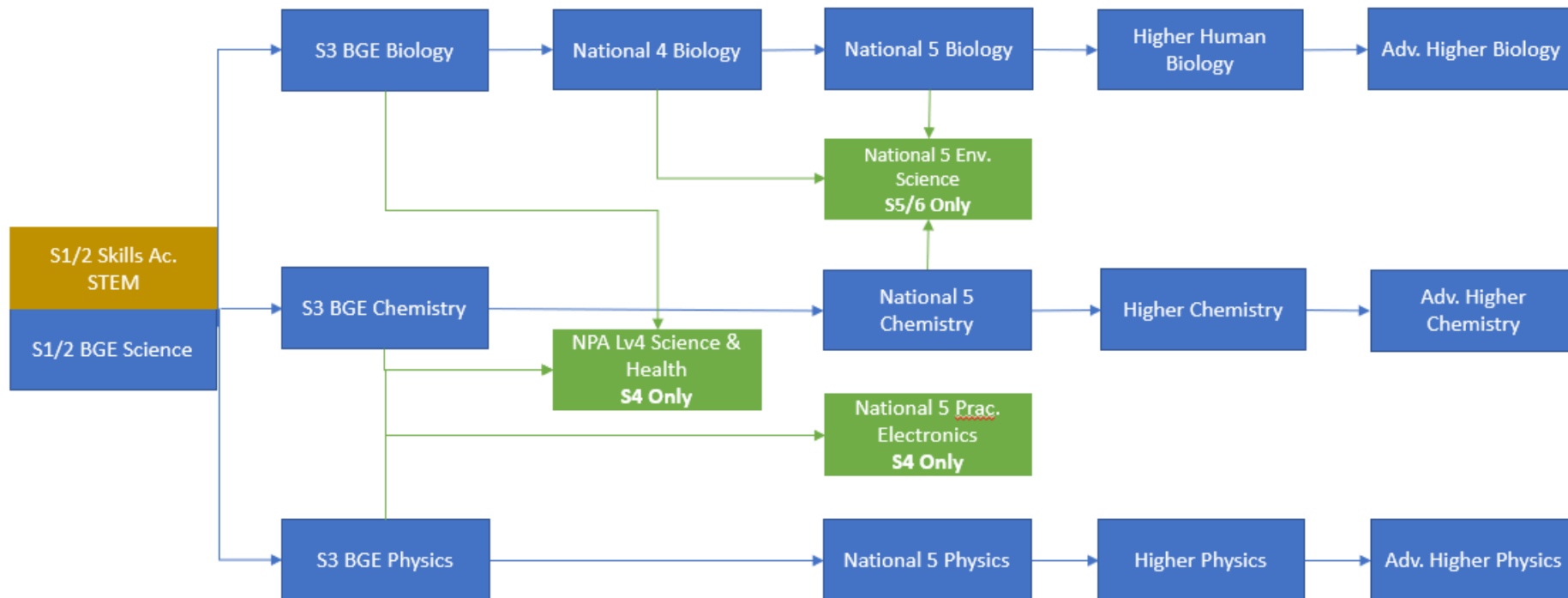
Level 5	Talking Performance, Writing Assignment & External Exam Unit assessments	→ National 5 Award → Internally assessed Unit Award(s)
Level 4	Unit Assessments & Assignment Unit assessments	→ National 4 Award. → Internally assessed Unit Award(s)

Learners may be recommended to begin study towards qualifications in French and/or Spanish at Level 4 or 5 in the senior phase dependant on progress through their BGE.

See the SQA pages for [Modern Languages](#) for more detailed information of content, assessment criteria and assessment standards at each level.

SCIENCE PATHWAYS @ QHS

More information on the specific options available at this stage in their learner journey are on the pages which follow.



BIOLOGY

Biology is the scientific exploration of the vast and diverse world of living organisms. This exploration has expanded enormously within the last four decades revealing a wealth of knowledge about ourselves and about the millions of other organisms with whom we share this planet Earth. Studying biology in school helps develop investigative skills, how to learn new facts, how to study and search for information and how to think more critically. These skills can help take us down a number of career paths in later life. Examples include: veterinary medicine, dental nursing, physiotherapy, landscape gardening, injury rehabilitation, teaching, pharmacology, marine biology, research scientist and medicine.

SCQF	Assessment Overview	Attainment
Level 5	Assignment (20%) & External Exam (80%) Unit assessments (including practical and research element)	→ National 5 Award. → Internally assessed Unit Award(s)
Level 4	Unit Assessments & Added Value Unit Unit assessments (including practical and research element)	→ National 4 Award. → Internally assessed Unit Award(s)

Learners may be recommended to begin study towards qualifications in Biology at Level 4 or 5 in the senior phase dependant on progress through their BGE. Learners can progress to Level 4 from Science and Health.

See the SQA pages for [Biology](#) for more detailed information of content, assessment criteria and assessment standards at each level.

CHEMISTRY

Chemistry is vital to our Society. It develops a wide range of skills and abilities through practical work, analytical thinking and other problem-solving skills. It tries to make links between learning and relate these to everyday life through an array of activities, including practical work, research challenges, debates, making short-films and using media clips to make learning Chemistry as stimulating as possible.

The study of Chemistry can lead to a career in a wide variety of areas such as: - Forensics, Lab technician, Doctor, Vet, Accountant, Banker, Photographer, Pharmaceuticals, Petrochemicals, Research scientist and Journalist.

SCQF	Assessment Overview	Attainment
Level 5	Assignment (20%) & External Exam (80%) Unit assessments (including practical and research element)	→ National 5 Award. → Internally assessed Unit Award(s)
Level 4	Unit Assessments & Added Value Unit Unit assessments (including practical and research element)	→ National 4 Award. → Internally assessed Unit Award(s)

Learners may be recommended to begin study towards qualifications in Chemistry at Level 4 or 5 in the senior phase dependant on progress through their BGE. Learners can progress to Level 4 in Science and Health.

See the SQA pages for [Chemistry](#) for more detailed information of content, assessment criteria and assessment standards at each level.

PHYSICS

In Physics, we look at the world around us and try to explain how things work. Physics is vital for our everyday lives.

All these jobs (and many more) require a Physics qualification: scientist, engineer, vet, doctor, dentist, nurse, architect, designer, mechanic, joiner, plumber, electrician, and researcher.

SCQF	Assessment Overview	Attainment
Level 5	Assignment (20%) & External Exam (80%) Unit assessments (including practical and research element)	→ National 5 Award. → Internally assessed Unit Award(s)
Level 4	Unit Assessments & Added Value Unit Unit assessments (including practical and research element)	→ National 4 Award. → Internally assessed Unit Award(s)

Learners may be recommended to begin study towards qualifications in Physics at Level 4 or 5 in the senior phase dependant on progress through their BGE. Learners can progress to Level 4 from Science and Health.

See the SQA pages for [Physics](#) for more detailed information of content, assessment criteria and assessment standards at each level.

PRACTICAL ELECTRONICS

Electronics is used all around us in our everyday life. In this practical course pupils will gain an understanding of how electronic circuits work and how to identify problems with them. They will also have the opportunity to design and build their own electronic circuits.

- **Circuit Design** –how electronic circuits operate and the roles of different components. They will analyse problems and design solutions to them.
- **Circuit Simulation** –use software to help them design and test circuits. They will also use it to help build their understanding of how circuits work.
- **Circuit Construction** –building a range of electronic circuits. They will develop their prototyping skills by building circuits to test before building permanent soldered circuits.

This course would be useful for careers in areas such as physics, engineering, IT, and electronics It would also be useful for those interested in areas such as the repair and maintenance of machinery, vehicles, and equipment.

SCQF	Assessment Overview	Attainment
Level 5	Practical Activity (70%) & External Exam (30%) Unit assessments (including practical and research element)	→ National 5 Award. → Internally assessed Unit Award(s)
Level 4	Unit Assessments & Added Value Unit Unit assessments (including practical and research element)	→ National 4 Award. → Internally assessed Unit Award(s)

Learners may be recommended to begin study towards qualifications in Practical Electronics at Level 4 or 5 in the senior phase dependant on progress through their BGE. The course can be studied alongside N5 Physics.

See the SQA pages for [Practical electronics](#) for more detailed information of content, assessment criteria and assessment standards at each level.

NPA SCIENCE AND HEALTH

Science is vital to everyday life and allows us to understand and shape the world in which we live and influence its future. Scientists play a key role in meeting society’s needs in areas such as medicine and health, energy, industry, material development, the environment and sustainability. As the importance and application of science continues to grow and develop, it is important that everyone has an informed view of science. An experimental and investigative approach is used to develop knowledge and understanding of science key areas. The Course provides opportunities for learners to recognise the impact science makes on developing sustainability, and its effects on the environment, on society and on the lives of themselves and others.

This course includes units of work in Biology, Chemistry and Physics:

- ✓ Biology - you’ll learn about the human health: the individual’s health, family health, health within community and finally global issues.
- ✓ In Chemistry, you’ll look at the use of fuels, hydrocarbons and find out about the useful products of plants.
- ✓ In Physics, you’ll explore the Electromagnetic Spectrum looking at different types of waves, how to measure them and Nuclear Radiation. (Unit – Waves and Radiation)

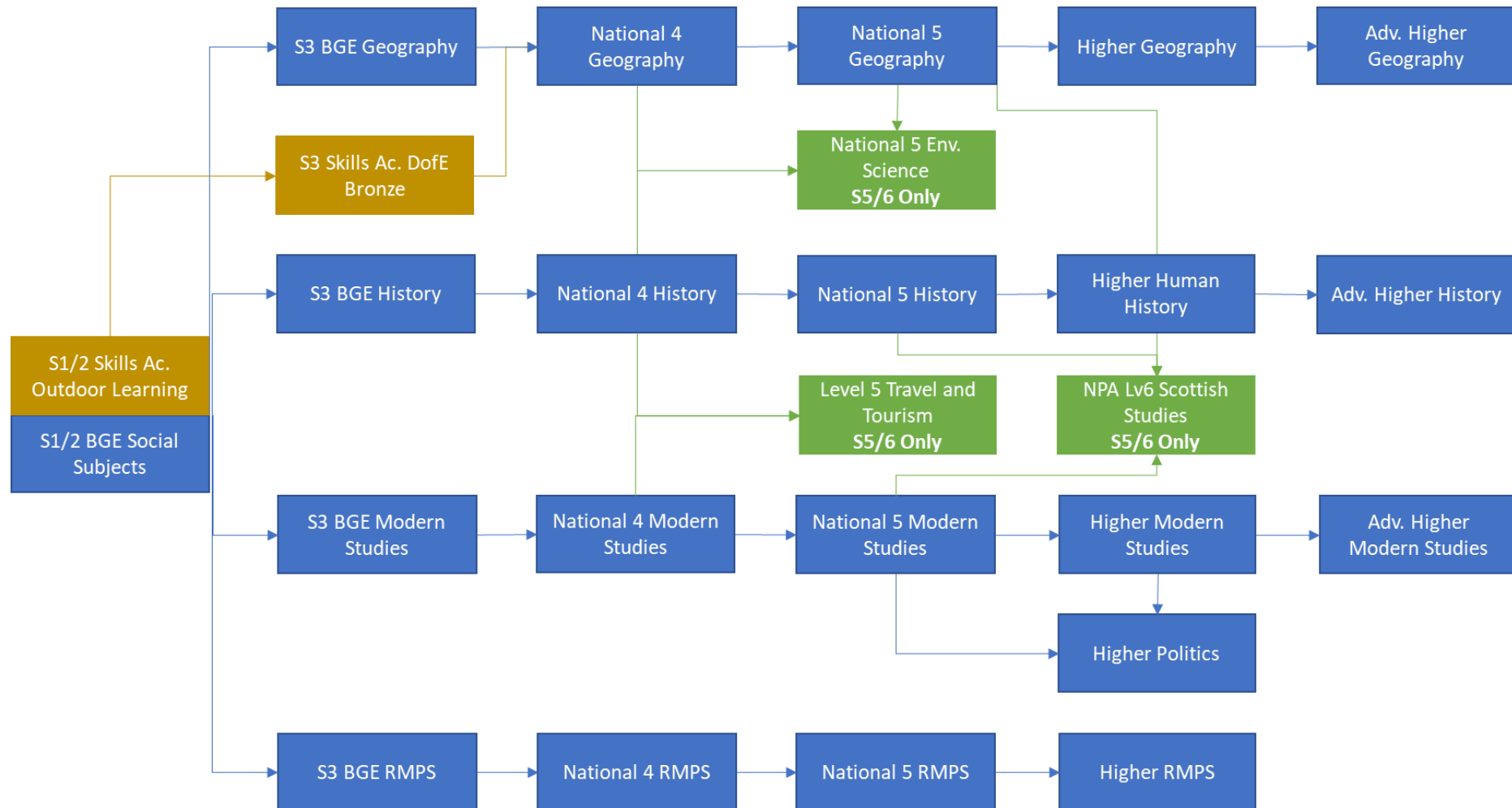
SCQF	Assessment Overview	Attainment
Level 4	Unit Assessments & Research Folio Unit assessments (including practical and research element)	→ NPA → Internally assessed Unit Award(s)

Learners may be recommended to begin study towards qualification in Science and Health at Level 4 in the senior phase dependant on progress through their BGE.

See the SQA pages for [Science and Health](#) for more detailed information of content, assessment criteria and assessment standards at each level.

SOCIAL SUBJECTS PATHWAYS @ QHS

More information on the specific options available at this stage in their learner journey are on the pages which follow.



GEOGRAPHY

Geography is the exploration of the world around us. These national courses you will get the chance to further develop your understanding of the ways in which our world is shaped by both physical and human factors.

SCQF	Assessment Overview	Attainment
Level 5	Assignment (20%) & External Exam (80%) Unit assessments	→ National 5 Award. → Internally assessed Unit Award(s)
Level 4	Unit Assessments & Added Value Unit Unit assessments	→ National 4 Award. → Internally assessed Unit Award(s)

Learners may be recommended to begin study towards qualification in Geography at Level 4 or 5 in the senior phase dependant on progress through their BGE.

See the SQA pages for [Geography](#) for more detailed information of content, assessment criteria and assessment standards at each level.

.

HISTORY

History may well be the study of the past but it also helps us to better understand the world in which we live. These national courses you will get the chance to further develop your understanding of a number of events which shaped the modern era. The units we cover in S4 are **The Atlantic Slave Trade: 1770 – 1807, Migration and Empire: 1830 – 1939** and **Hitler and Nazi Germany: 1919 – 1939**

SCQF	Assessment Overview	Attainment
Level 5	Assignment (20%) & External Exam (80%) Unit assessments	→ National 5 Award. → Internally assessed Unit Award(s)
Level 4	Unit Assessments & Added Value Unit Unit assessments	→ National 4 Award. → Internally assessed Unit Award(s)

Learners may be recommended to begin study towards qualification in History at Level 4 or 5 in the senior phase dependant on progress through their BGE.

See the SQA pages for [History](#) for more detailed information of content, assessment criteria and assessment standards at each level.

MODERN STUDIES

Modern Studies is the study of people and the world around us and as such is always changing. In S3 you will get the chance to further develop your understanding of the realities which shape our lives. These national courses you will get the chance to further develop your understanding your understanding of the realities which shape our lives.

SCQF	Assessment Overview	Attainment
Level 5	Assignment (20%) & External Exam (80%) Unit assessments	→ National 5 Award. → Internally assessed Unit Award(s)
Level 4	Unit Assessments & Added Value Unit Unit assessments	→ National 4 Award. → Internally assessed Unit Award(s)

Learners may be recommended to begin study towards qualification in Modern Studies at Level 4 or 5 in the senior phase dependant on progress through their BGE.

See the SQA pages for [Modern Studies](#) for more detailed information of content, assessment criteria and assessment standards at each level.

RELIGIOUS, MORAL AND PHILOSOPHICAL STUDIES

This course explores deep questions about right and wrong, belief systems and ultimate questions about our existence. The skills you will develop are critical thinking, discussion and debate and cultural sensitivity which are essential life skills in the 21st century and relevant to many career paths including law, medicine, the humanities and social and health care.

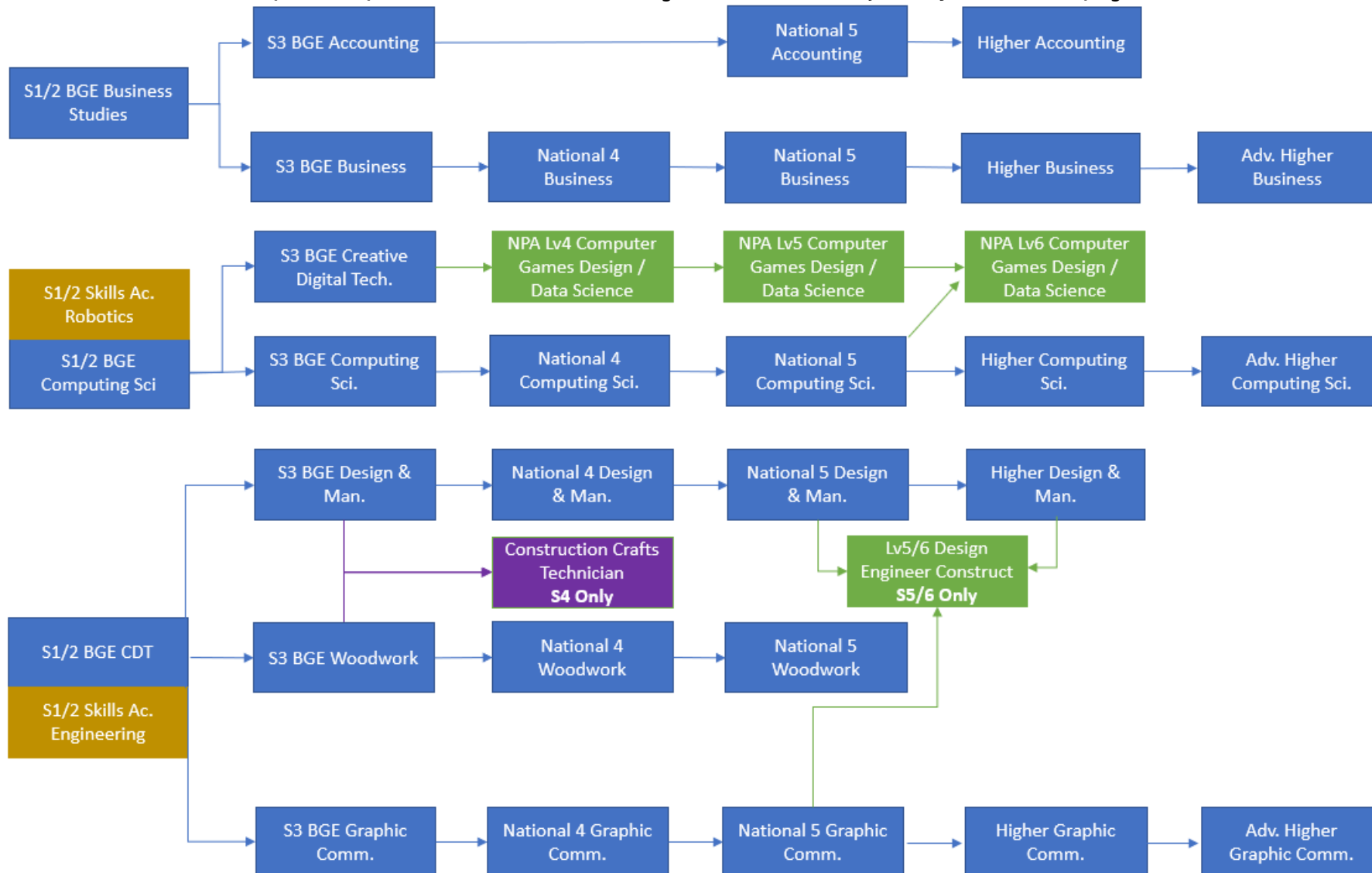
SCQF	Assessment Overview	Attainment
Level 5	Assignment (20%) & External Exam (80%) Unit assessments	→ National 5 Award → Internally assessed Unit Award(s)
Level 4	Unit Assessments & Added Value Unit Unit assessments	→ National 4 Award. → Internally assessed Unit Award(s)

Learners may be recommended to begin study towards qualification in RMPS at Level 4 or 5 in the senior phase dependent on progress through their BGE.

See the SQA pages for [Religious, Moral and Philosophical Studies](#) for more detailed information of content, assessment criteria and assessment standards at each level.

TECHNOLOGIES PATHWAYS @ QHS

More information on the specific options available at this stage in their learner journey are on the pages which follow.



ACCOUNTING

This course covers 3 topics which give learners a more detailed knowledge of the important areas of Accounting.

- ✓ **Preparing Financial Accounting Information**
 - preparation of final accounts for partnership and plc companies in relation to ownership.
- ✓ **Preparing Management Accounting Information**
 - prepare management accounting statements and make business decisions.
- ✓ **Analysing Accounting Information**
 - perform ratio calculations and analyse the results.

We have also established partnerships with Accountancy firms Johnston Carmichael and Azets who visit the school and offer workshops and placement opportunities.

SCQF	Assessment Overview	Attainment
Level 5	Assignment (28%) External Exam (72%) Unit assessments	→ National 5 Award. → Internally assessed Unit Award(s)

Learners may be recommended to begin study towards a qualification in Accounting through demonstration of their ability to study at Level 6. They should already have achieved a Higher Award in another subject. They should already have achieved Level 5 Maths before beginning study at this level.

See the SQA pages for [Accounting](#) for more detailed information of content, assessment criteria and assessment standards at each level.

BUSINESS MANAGEMENT

Business Management can play an important role in preparing you for employment both by extending your understanding of business and trying to make sense of what you see and read on the news – be it inflation, interest rates, how businesses use social media. It is a subject that is live and interactive!

The course is also excellent preparation for the vast number of further and higher education courses with a business, legal or media theme. Students gaining this award will be well equipped in problem-solving, decision-making, literacy, numeracy and ICT skills and generic academic skills necessary in today's competitive job market.

SCQF	Assessment Overview	Attainment
Level 5	Assignment (25%) & External Exam (75%) Unit assessments	→ National 5 Award. → Internally assessed Unit Award(s)
Level 4	Unit Assessments & Added Value Unit Unit assessments	→ National 4 Award → Internally assessed Unit Award(s)

Learners may be recommended to begin study towards a qualification in Business Management at Level 5 in the senior phase dependant on progress through their BGE.

See the SQA pages for [Business Management](#) for more detailed information of content, assessment criteria and assessment standards at each level.

COMPUTING SCIENCE

Computing Science is a vital part of everyday life both socially and economically. Technology helps to shape the world in which we live and its future. It is key for systems and devices in our homes and workplaces, to how we access education, entertainment, transport and communication.

The National 5 Computing Science course consists of elements of technology, science and creative digital media. Skills and knowledge of analysis, design, implementation, and evaluation are established when developing a range of digital solutions. Students will also gain key transferable skills in problem solving, communication and digital awareness which are essential employment skills.

SCQF	Assessment Overview	Attainment
Level 5	Assignment (31%) & External Exam (69%) Unit assessments	→ National 5 Award. → Internally assessed Unit Award(s)

Learners may be recommended to begin study towards a qualification in Business Management at Level 5 in the senior phase dependant on progress through their BGE.

See the SQA pages for [Computing Science](#) for more detailed information of content, assessment criteria and assessment standards at each level.

COMPUTER GAMES DEVELOPMENT

Do you have an interest in the games industry? Video games are an exciting industry which has flourished in recent years with small games companies springing up all over Scotland. The video games industry has seen record sales in recent years making over \$180 billion in 2020, more than the movie industry and all major sport leagues combined.

This course investigates the genres, trends and emerging technologies of the computer games industry. It provides a foundation in techniques that are important to the sector, such as digital planning and design, creation of media assets, and development and testing, while also improving computational thinking skills — a vital 21st century skill.

SCQF Assessment Overview

Attainment

Level 5 Unit assessments

→ NPA

→ Internally assessed Unit Award(s)

Learners may be recommended to begin study towards a qualification in Computer Games Development at Level 5 in the senior phase dependant on progress through their BGE.

[Click here](#) to read more about the course and assessments.

CONSTRUCTION CRAFTS – in partnership with EDINBURGH COLLEGE

Delivered in school at QHS



This course provides the opportunity to try a variety of trade disciplines.

The main focus is on developing good hand tool skills and employability skills. There may also be opportunities for work placements and visits to building sites. What you will learn

- ✓ Brickwork: Intro to Brickwork; Half Brick, One brick and Decorative
- ✓ Introduction to Ground Operations; Preparation, Concrete screed, Slabbing and mono-blocks.
- ✓ Carpentry and Joinery; Tools and uses, Different materials and joints, Finishing Skills and Decorative piece.
- ✓ Tiling; Use of tools and Materials, Wall Tiling, Floor tiling and decorative pattern work

SCQF Assessment Overview

Attainment

Level 5 Unit assessments

- National Progression Award..
- Internally assessed Unit Award(s)

There are no formal entry requirements for this course but applicants should show a keen interest in construction. **This course can be studied at the same time as Practical Woodwork or Design & Manufacture**

See the Edinburgh College pages for [Construction Crafts NPA](#) for more detailed information of content, assessment criteria and assessment standards at each level.

NPA DATA SCIENCE

Data science is one of the fastest-growing areas. In our digital world, everything is data-driven. Many career paths will include data science including business, science, and engineering.

The course explores the methods of data analysis to identify patterns and trends in data. Before examining how data can be used positively or misused by companies and organisations when looking at the use of data in society.

Skills and knowledge of software, data analysis and communication are explored. Students will also gain key transferable skills in problem solving, and digital awareness which are essential employment skills.

SCQF	Assessment Overview	Attainment
Level 6	Unit assessments	→ NPA → Internally assessed Unit Award(s)
Level 5	Unit assessments	→ NPA → Internally assessed Unit Award(s)

Learners may be recommended to begin study towards a qualification in Data Science at Level 5 in the senior phase dependant on progress through their BGE.

DESIGN & MANUFACTURE

These courses allow learners to explore the multifaceted world of product design and manufacturing. Creativity is at the heart of this course and its combination with technology makes it exciting and dynamic.

The course provides learners with the opportunity to develop skills that are of general value for learning, life and work; the ability to read drawings and diagrams; the ability to communicate design ideas and practical details; the ability to devise and develop practical solutions to design problems and the ability to manufacture their design ideas.

SCQF	Assessment Overview	Attainment
Level 5	Design Element (30%), Practical Task (25%) & External Exam (45%) Unit assessments	→ National 5 Award. → Internally assessed Unit Award(s)
Level 4	Unit Assessments & Added Value Unit Unit assessments	→ National 4 Award. → Internally assessed Unit Award(s)

Learners may be recommended to begin study towards a qualification in Design and Manufacture at Level 4 or 5 in the senior phase dependant on progress through their BGE.

See the SQA pages for [Design and Manufacture](#) for more detailed information of content, assessment criteria and assessment standards at each level.

GRAPHIC COMMUNICATION

Communication in all its forms is vital to society and the means of passing on information graphically is an important and relevant skill. Communication through graphics, in whatever medium, permeates all spheres of life including education, industry and commerce.

Pupils participating in these courses will have the opportunity to develop skills and abilities in a wide range of graphical techniques. These skills are relevant to Product Designers, Engineers, Architects, Graphic Designers and those wanting to pursue a career in advertising and marketing, digital media and game design.

SCQF	Assessment Overview	Attainment
Level 5	Assignment (33%) & External Exam (67%) Unit assessments	→ National 5 Award. → Internally assessed Unit Award(s)
Level 4	Unit Assessments & Added Value Unit Unit assessments	→ National 4 Award. → Internally assessed Unit Award(s)

Learners may be recommended to begin study towards a qualification in Graphic Communication at Level 4 or 5 in the senior phase dependant on progress through their BGE.

See the SQA pages for [Graphic Communication](#) for more detailed information of content, assessment criteria and assessment standards at each level.

PRACTICAL WOODWORKING

This Course is a broad-based qualification for learners with an interest in crafts. It is suitable for learners with an interest in practical woodworking and those wanting to progress to higher levels of study or a related career.

The Course provides opportunities to develop and enhance psychomotor skills, practical creativity, practical problem-solving skills, an appreciation of safe working practices in a workshop environment, and knowledge of sustainability issues in a practical woodworking context.

We will work through the following techniques/processes:

- ✓ Flat-frame Construction
- ✓ Carcase Construction
- ✓ Machining and Finishing

SCQF	Assessment Overview	Attainment
Level 5	Assignment (Exam currently removed tbc for 2022/23) Unit assessments	→ National 5 Award. → Internally assessed Unit Award(s)
Level 4	Unit Assessments & Added Value Unit Unit assessments	→ National 4 Award. → Internally assessed Unit Award(s)

Learners may be recommended to begin study towards a qualification in Practical Woodworking at Level 4 or 5 in the senior phase dependant on progress through their BGE.

See the SQA pages for [Practical Woodworking](#) for more detailed information of content, assessment criteria and assessment standards at each level.

EMPLOYABILITY AND ENTERPRISE AWARD

In S4, our focus is on developing young people’s skills for the transitions into life beyond school. We give young people to gain Level 5 Units in Employability and Enterprise. The units we experience are:

- ✓ Personal Development: Self-Awareness
- ✓ Preparing to Work
- ✓ Work Experience
- ✓ Working for Yourself

SCQF Assessment Overview

Attainment

Level 5 Unit assessments

- National Progression Award..
- Internally assessed Unit Award(s)

Level 4 Unit assessments

- National Progression Award..
- Internally assessed Unit Award(s)

See the SQA pages for [Enterprise and Employability](#) for more detailed information of content, assessment criteria and assessment standards.