

---

Together Everyone

**TEAM**



Achieves More

*work hard and be kind*

---

S3 Pathway Planning Information  
(New S4)

# Our Planning

**Supported** → available from PSL, SfL Leader, WBH Leader and ESB Leader.

**Strategic** → sharing of information as choice is opened to direct young people into the areas they have the best chance of the highest levels of attainment

**Sustainable** → subject availability is planning based on our young people's interests and ambitions.

- All young people will have the opportunity to discuss their choices through PSE
- Some young people receiving intensive support from these areas will have 1:1 support to complete.
- A few young people will have 1:1 meetings with their house DHT if their choices aren't compatible with their recommendations/current progress.
  
- Tracking report detailing recommended levels
- Pathway planning information personalised to highlight their best areas
- House DHT review of choices to ensure they meet young people's potential
  
- Positive destination information has informed our offer of subjects
- Partnerships with Edinburgh College to offer vocational course to young people
- Partnerships with employers will be built based on our young people's needs.

# Timeline (New S4)

**17 January** Pathway Planning Launch

**19 January** Booklet and recommendations shared with parent/carers and young people (alongside tracking report)

**19 January → 31 January** Support available from school staff to discuss choices.

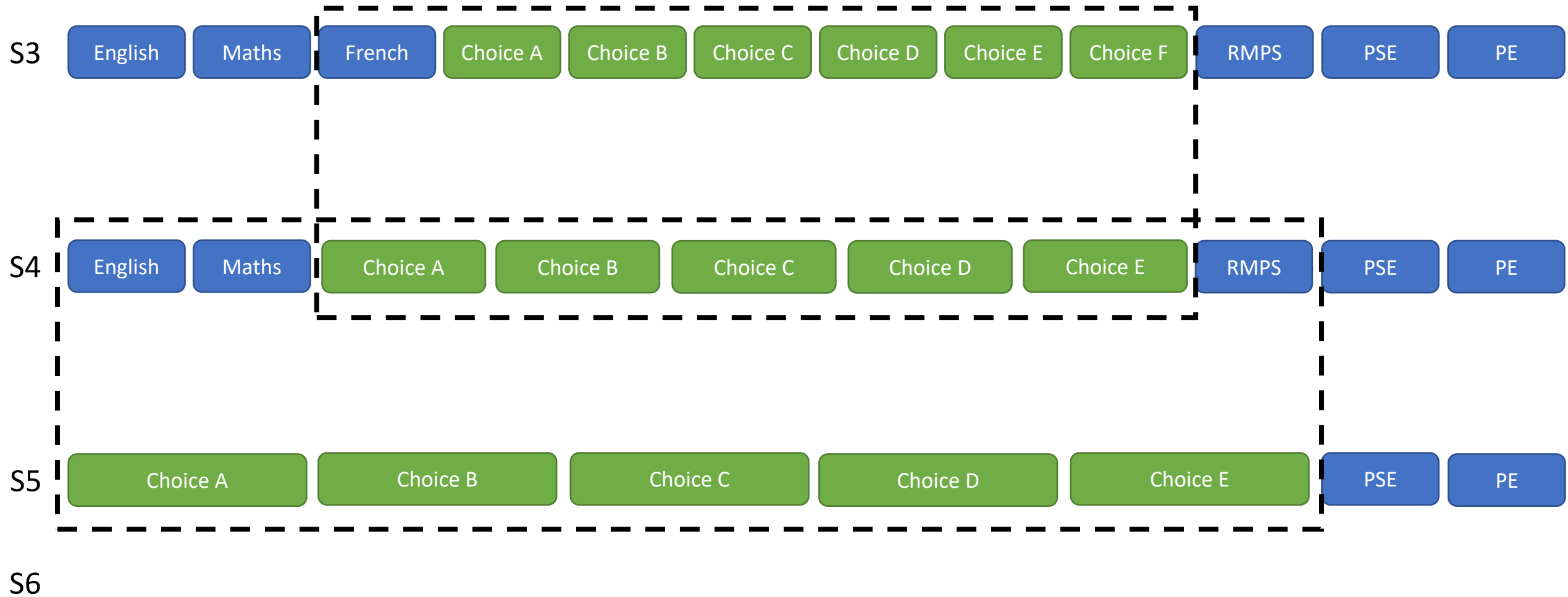
**1 February** **Choice submission deadline**

**5 February → 9 February** Choices reviewed by House Team – any follow up discussions with young people and information relayed to parents/carers.

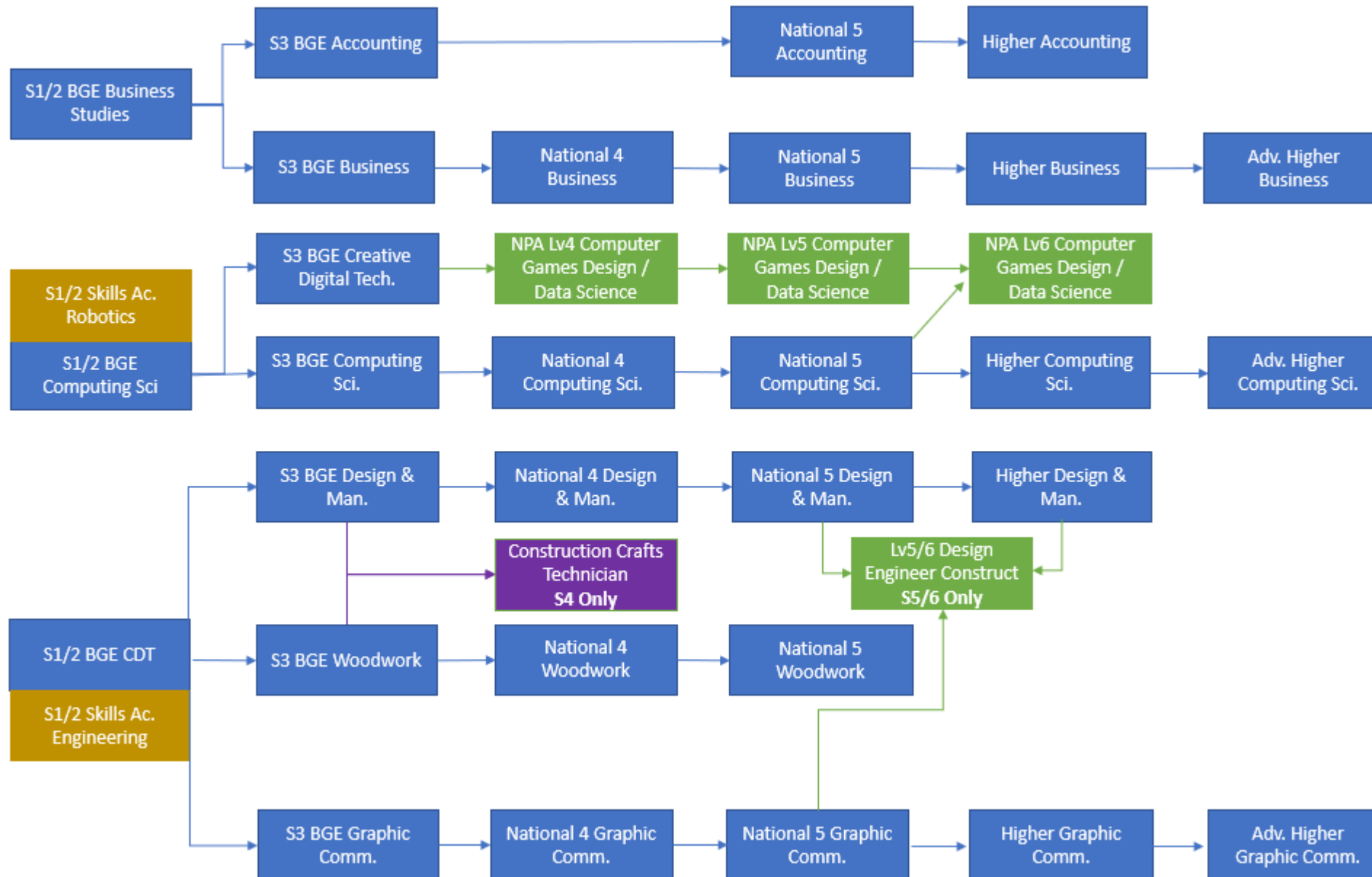
**w/b 29 April** Timetables confirmed with parents/carers and young people

**8 May** New timetable!

# Our Curriculum Structure



# PATHWAYS @ QHS



# Your Choices (New S4)

Learners must add to these by choosing **5 subjects** from any of the following (4 periods each):

**English & Literacy** – Media

**Expressive Arts** – Art, Drama, Music, Photography

**Health and Wellbeing** – Dance, Practical Cookery, Early Learning & Childcare, Prof Cookery, PE, PE-Creative & Aesthetic, Practical Cookery, Health and Food Technology, Hairdressing and Beauty

**Modern Languages** – French, Mandarin, Spanish

**Sciences** – Biology, Chemistry, Physics, Science & Health, Practical Electronics

**Social Subjects** – Geography, History, Modern Studies, RMPS

**Technologies** – Accounting, Business Management, Computer Games Development, Construction Crafts, Computing Science, Design and Manufacture, Practical Woodwork, Graphic Communication.

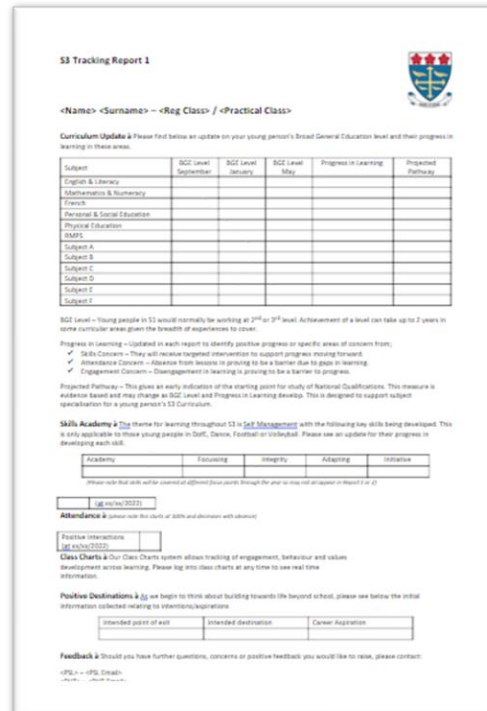
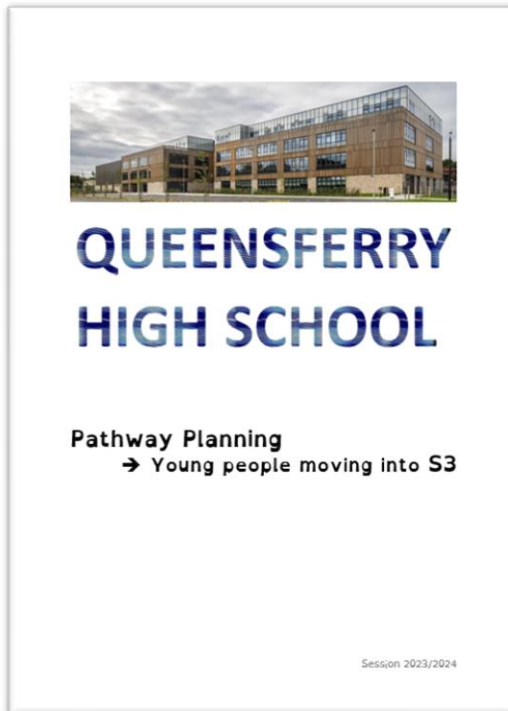
# Resources

Parents/Carers and young people have access to the following supports to help with choice:

- ✓ Pathway Planning Booklet

- ✓ Tracking Reports (including recommendations)

- ✓ Pupil Support Leaders (WBH/ESB/SfL)
- ✓ House Depute Headteacher



Ms Lamb & Ms Chisholm



Ms Hannah & Mr Lewis



Mr Thomas & Mr Manson



Ms MacNeil & Ms Gordon

- ✓ School Based Careers Adviser

# Positive Destinations

Parents/Carers and young people will be asked to support our planning for young peoples' positive transitions beyond school by updating us with:

- Planned point of exit (S4/S5/S6)
- Intended destination
  - ✓ Employment
  - ✓ Volunteering
  - ✓ Apprenticeships
  - ✓ College
  - ✓ University
- Future career sector aspiration

This allows us to plan opportunities and curricular offers throughout the senior phase based on the aspirations of our young people

# Travel

For session 2024/5, we will continue our support for school transport applications.

On your course choice form, you'll be asked to give consent for QHS to apply on your behalf and to confirm some emergency contact details for parent/carers to ensure their accuracy.

Letters for travel will then be posted home as usual.

Travel passes will be sent to school for distribution.



Questions?